



RISING ABOVE BAKERY

Baking bread. Together as one.

Rising Above Bakery serves Bergen County, NJ, and Rockland County, NY, with premium breads and other baked goods made by hand from the finest ingredients.

Our bakers are young adults with special needs and learning differences who are learning the ways of the bakery while acquiring valuable life skills, pride, and self-sufficiency through the craft of baking.



Our Story

Shiri Reuveni-Ullrich, a speech therapist and avid baker, noticed the dramatic effect that baking cookies had on her nonverbal, autistic young adult students. The kitchen filled with chatter, singing, laughter, and verbalizing as students became comfortable with the work. From that moment, Shiri set out to create Rising Above, a bakery where individuals with disabilities could find their voice and live meaningful, independent lives.

Today, Rising Above is a small cottage bakery in Rockland County, NY. In our kitchen, young people of all abilities are learning the craft of baking by making beautiful sourdough loaves, babkas, cookies, and much more – some 40 products in all.



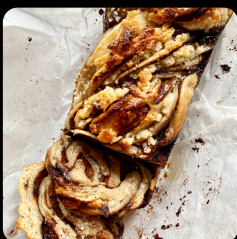
Our Vision

Rising Above Bakery is operating as a cottage bakery at the moment. We are working to secure a storefront location where we can fully develop our vision of a community-building service business that employs and imparts meaningful life skills to young adults with a wide range of developmental disabilities.

Rising Above Bakery sees itself at the center of three overlapping communities: Our bakers-in-training and their families; our customers; and our storefront friends and neighbors. The bakers we train are united by their experience of a life-affirming, confidence-building work experience that can open a path to a meaningful, productive life. Our customers share their enjoyment of our delicious, hand-crafted baked goods – and also the knowledge that each item they purchase has given an individual the opportunity to practice the craft of baking.

Our Founder

Shiri Reuveni-Ullrich was a pediatric speech therapist and teacher for more than twenty years, working primarily with children and young adults diagnosed with autism. Her focus has always been on developing social skills – everything from simple greetings, to initiating and carrying a conversation, to negotiating a job interview. With Rising Above Bakery, Shiri's vision is to help develop independent, empowered bakers who possess the skills and self-confidence needed to live independent, fulfilling lives: Getting up each morning motivated to start the day and go to work, meeting people and taking part in social interactions in an inclusive environment.



RisingAboveBakery.org

GET IN TOUCH

Shiri@RisingAboveBakery.org

646-541-4595

5 Karow Ct, Chestnut Ridge, NY

Rising Above Bakery Inc. is a 501(c)(3) nonprofit organization